

Aligning to *AMPLIFY*

February 2, 2023



AMPLIFIED

A 5-year plan for growth



WEBER STATE
UNIVERSITY

AMPLIFIED Goals & Targets



Equity,
Diversity,
& Inclusion



Personal
Connections
& Academic
Excellence



Marketing &
Branding

eHSI

Emerging
HSI



Retention &
Completion



Community
Anchor
Mission

32k/
18.7k

Enrollment
Targets



Current Student Affairs Areas

Student Wellbeing

- Counseling & Psychological Services Center
- Student Wellness
- Campus Recreation
- Center for Community Engaged Learning

Dean of Students

- Student Conduct
- Mentoring Program
- Women's Center
- Non-traditional Student Center
- Disability Services
- Marketing

Academic Support

- Learning Support
- Testing Services
- Career Services
- Technology Computer Labs
- WSU Davis Student Services
- Wildcat Scholars First Year Program
- Veterans Upward Bound
- Veterans Services

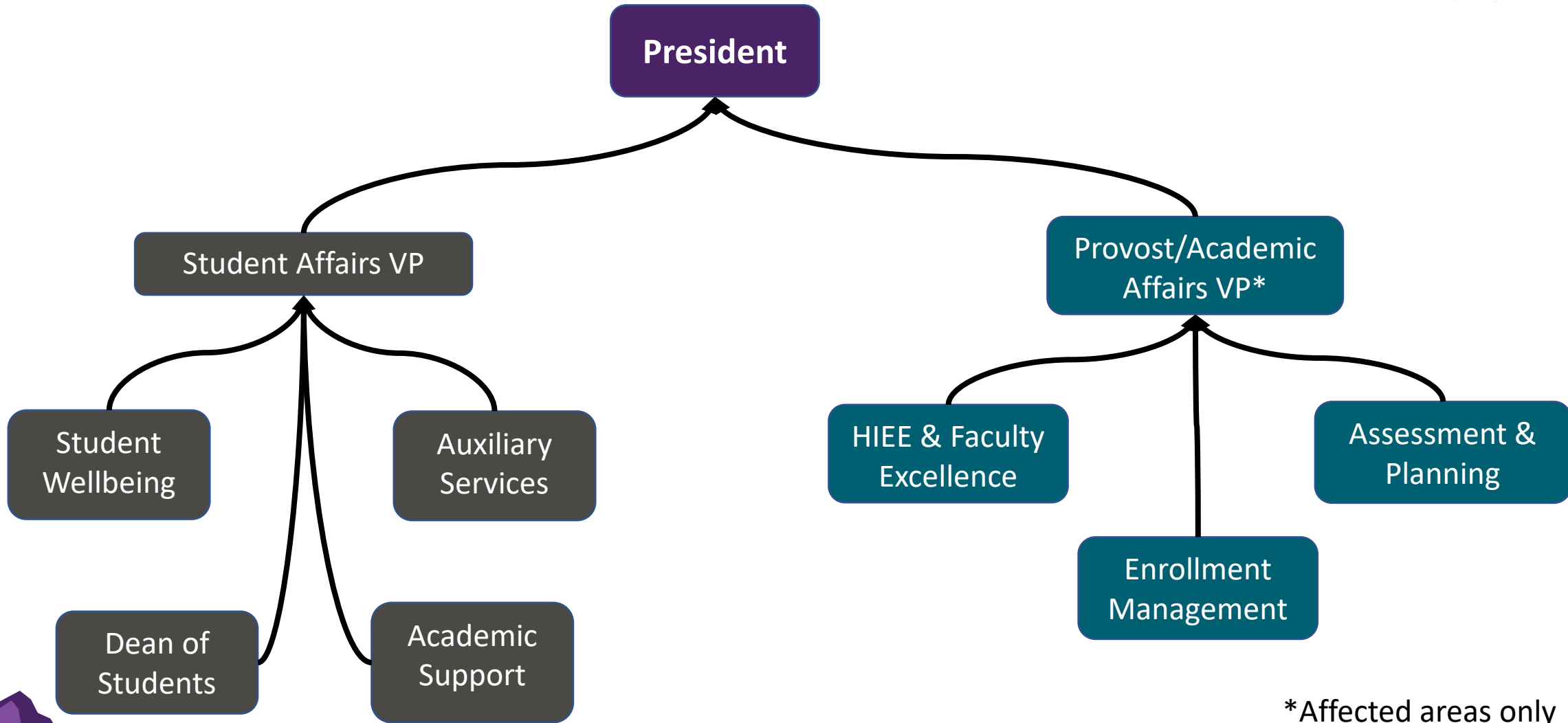
Auxiliary Services

- Facilities
- Shepherd Union
- Student Involvement & Leadership
- Dining Services
- Housing & Residence Life
- Finance
- Retention & Success
- Starfish
- Health Services
- Basic Needs/Money Management

- Office of International Programs
- International Student Center



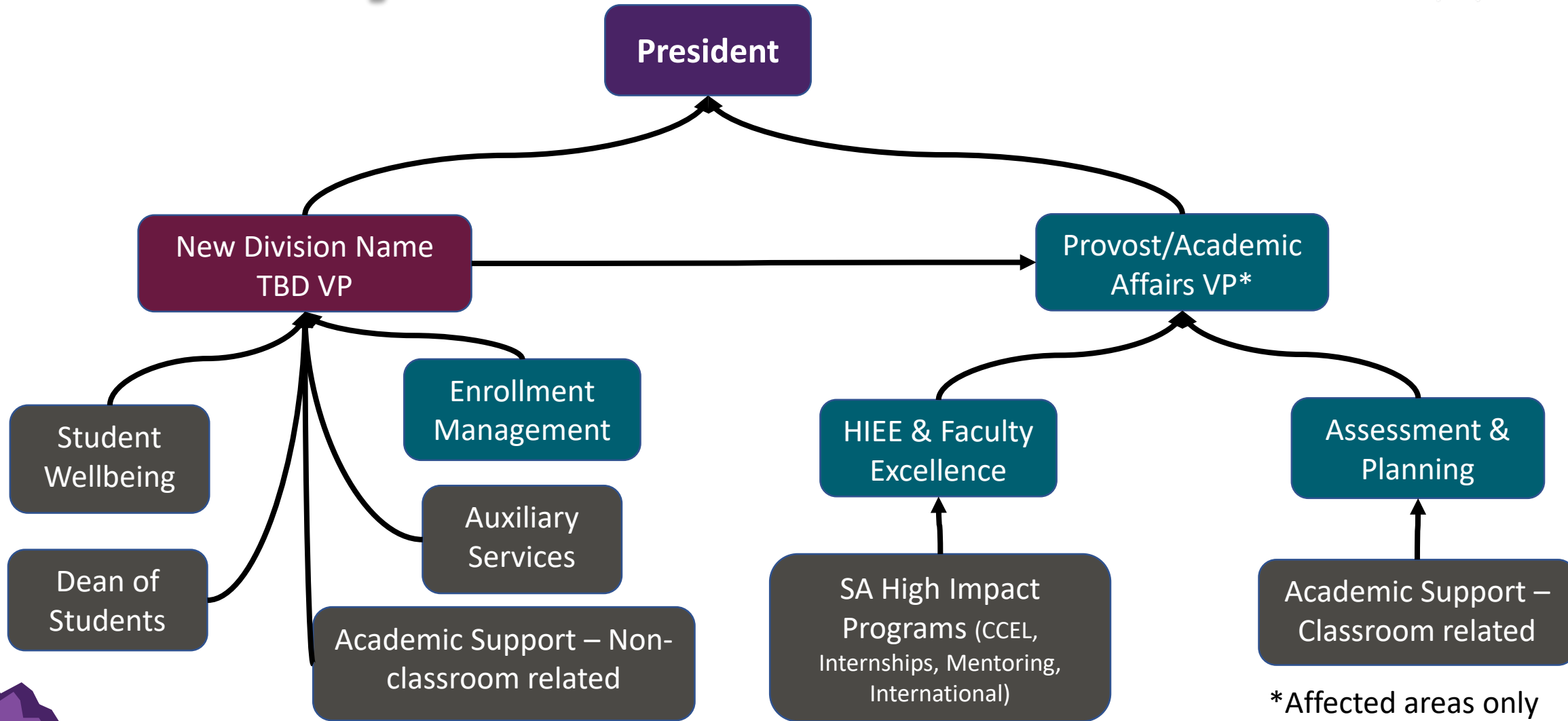
Current Structure



*Affected areas only



Proposed Structure



*Affected areas only



Area currently in Academic Affairs

Area currently in Student Affairs

Area currently in EDI

NEW DIVISION NAME TBD

GOALS & TARGETS

32k/
18.7k



From Student Wellbeing

- Counseling & Psychological Services Center
- Student Wellness
- Campus Recreation

From Academic Support (except Exec. Dir.)

- WSU Davis Student Services
- Career Services (except Internships)
- Veterans Upward Bound
- Veterans Services

From Enrollment Management & Student Success

- Student Success Center
- Financial Aid & Scholarships
- Registrar
- Admissions
- Dual Enrollment

Student Success Coaches

Student Success Coaches

From Dean of Students

- Student Conduct
- Women's Center
- Non-traditional Student Center
- Disability Services

From Auxiliary Services

- Shepherd Union
- Student Involvement & Leadership
- Dining Services
- Residence Life
- Finance
- Retention & Success
- Starfish
- Health Services
- Basic Needs/Money Management

From College Access & First Year Transition

- Statewide GEAR UP
- GEAR UP – Ogden City
- TRiO Upward Bound



Area currently in Academic Affairs

Area currently in Student Affairs

Academic Program Quality, Planning & Institutional Effectiveness – Undergraduate Studies

GOALS & TARGETS



University-wide Undergrad Programs

- Interdisciplinary Collaborations
- Honors

Transferred from High Impact Programs & Faculty Excellence

Accreditation, Assessment and Improvement, & Program Review

General Education Innovation & Evaluation

First-year Programming

- Learning Communities
- Wildcat Scholars

Student Success Coaches

From Academic Support (Including Exec. Dir.)

- Learning Support
- Testing
- Student Support Services
- Student Support Services – STEM



Area currently in Academic Affairs

Area currently in Student Affairs

High Impact Programs & Faculty Excellence – International Programs

GOALS & TARGETS



Community Development

High Impact Educational Experiences

- Center for Community Engaged Learning
- Office of Undergraduate Research
- Study Abroad
- Digital Fluency
- Sustainability Practices & Research Center

Faculty Excellence

- Teaching & Learning Forum

Graduate Programs

Student
Success
Coaches

From Academic Support

- Internships (Career Services)

From Student Wellbeing

- Center for Community Engaged Learning

Office of International Programs

- International Student & Scholar Center
- Study Abroad

From Dean of Students

- Mentoring



Area currently in Student Affairs

Area currently in EDI

Equity, Diversity, & Inclusion

GOALS & TARGETS



eHSI

Hispanic Serving Institution Initiatives

Dreamer Services

LGBT Resource Center

Women's Center - Advocacy

Student Success Coaches

Equity in Access (transitioned from Student Affairs to EDI on Jan. 3, 2023)

Transition from Center for Multicultural Excellence to Centers for Belonging & Cultural Engagement

Diversity & Inclusive Programs



Area currently in Student Affairs

OTHER CHANGES

From Auxiliary Services

- Shepherd Union and Housing Facility Management reports to Administrative Services – Facilities Management
- Student Affairs Data & Analytics and Academic Analytics reports to Academic Affairs – Chief Data Officer

From Academic Support to IT

- Technology Computer Labs

New Division Name TBD VP dual reports to President and Provost to facilitate integrated focus on student success.

GOALS & TARGETS



32k/
18.7k

GOALS & TARGETS



From Dean of Students

- Marketing reports to University Advancement – Marketing & Communications



Academic Support

- WSU Davis Student Services dual reports to Regional Partnerships – WSU Davis

Information Technology VP dual reports to President and VP of Administrative Services, aligning administrative backbone and support functions of university and enabling financial modeling.



New Division Name

