



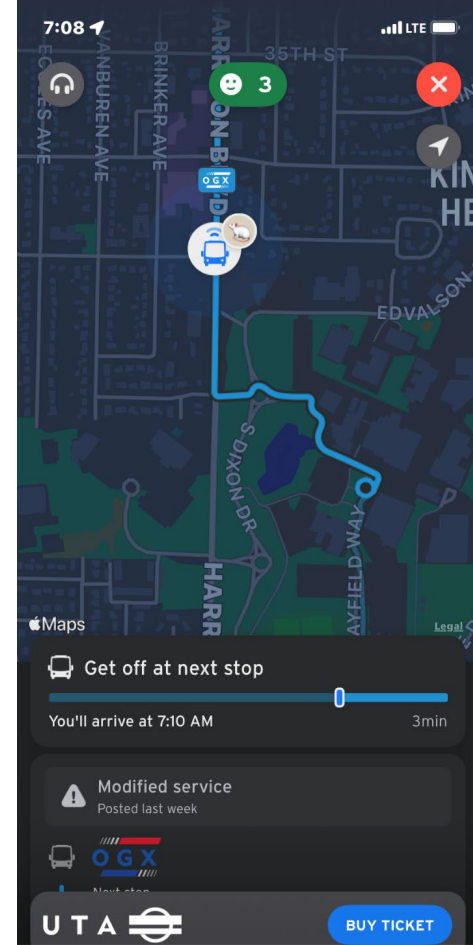
Faculty & Staff Town Hall

August 21, 2023

Photography by Benjamin Zack



WEBER STATE
UNIVERSITY



OGX Up & Running



Adam Grant ✓
@AdamMGrant

Feeling unsteady is not a sign of instability. It's often a path to progress.

Standing still feels secure, but gaining momentum to move forward requires tilt or sway. Walking is controlled falling.

Being in equilibrium breeds comfort. Feeling off balance leads to growth.

WHAT WE THINK WE NEED

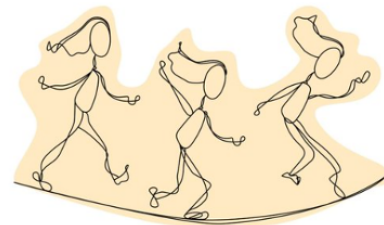
PERFECT BALANCE



STANDING STILL

WHAT WE ACTUALLY NEED

DELIBERATE IMBALANCE



MOVING FORWARD

Instability vs. Progress




WEBER STATE
UNIVERSITY

AMPLIFIED

A 5-year plan for growth

STRATEGIC PLAN METRICS & ACHIEVEMENTS

Year Two
Revised: August 7, 2023



Equity, Diversity
& Inclusion



Retention &
Completion



Personal Connections
& Academic Excellence



Community
Anchor Mission



Marketing
& Branding



Amplified Year 2



- 8-year (7/1/20 to 6/30/28) effort
- Focus: Weber State Amplified Plan
- Big W Initiatives
 - Completion ('CATapult)/Access Scholarships
 - eHSI goal
 - Learning Communities
 - Teaching Excellence
 - Signature Clusters
- As of June 26, raised \$63,330,366
- \$200,000,000 working goal.
- Accumulated endowment earnings as of

12/31/22: \$13,169,387.24

Amplify Weber State: The Campaign for Weber State

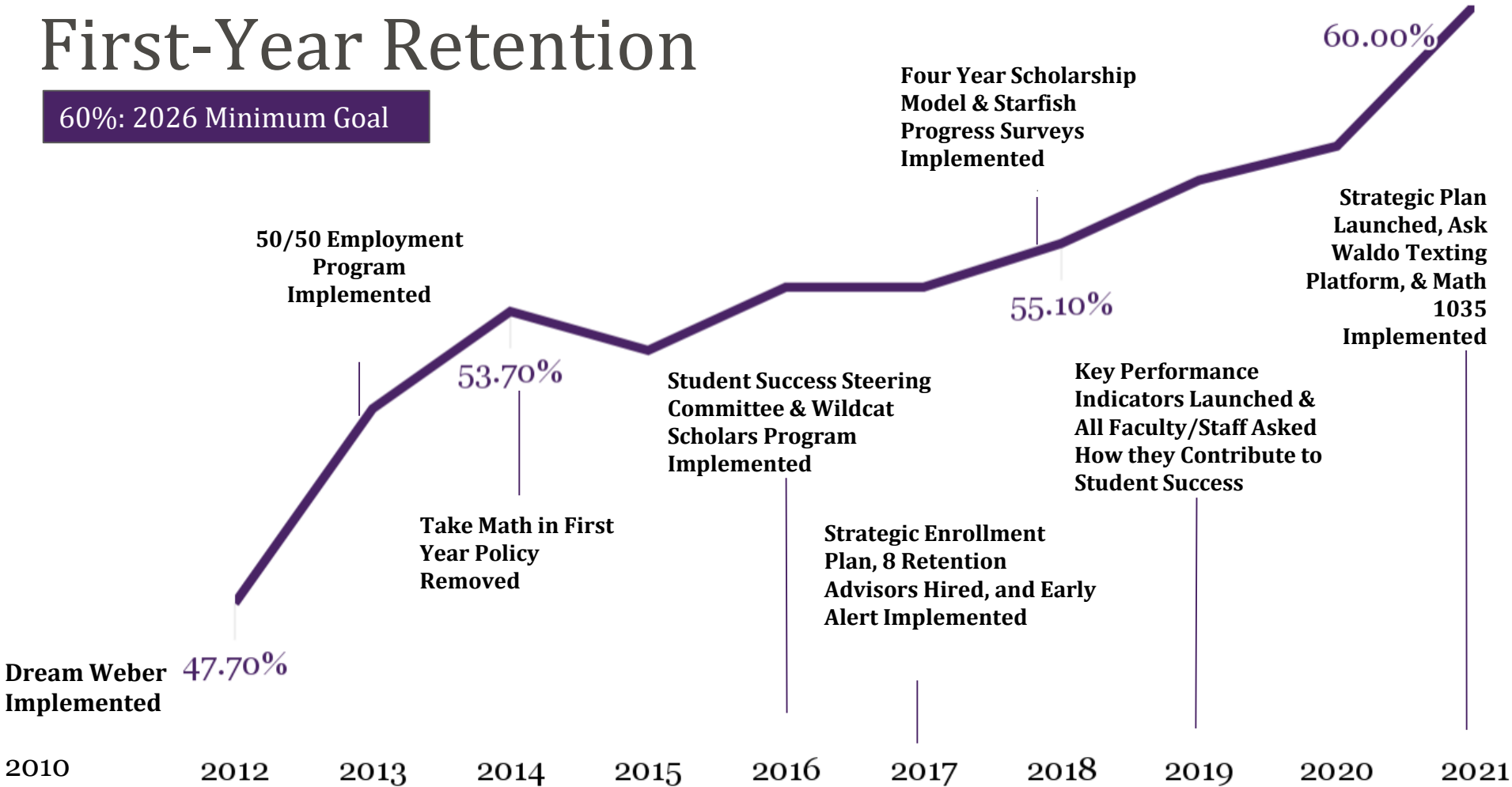
- 7/1/13 to 7/1/23: WSU Tuition & Fees 28.1%, CPI 30.9%
- Minimum Salaries 7/1/20 to 7/1/23
 - Non-exempt: \$23,000 to \$31,500
 - Exempt: \$35,568 to \$43,500
- Down 13% in waitlist list events
- Record admits (10,300) & yield (27%)
- Degree-seeking enrollment up by .3%
- Grad rate up 7% in 10 yrs, 10% for first-time, full-time
- Budget related FTE up 1.3%



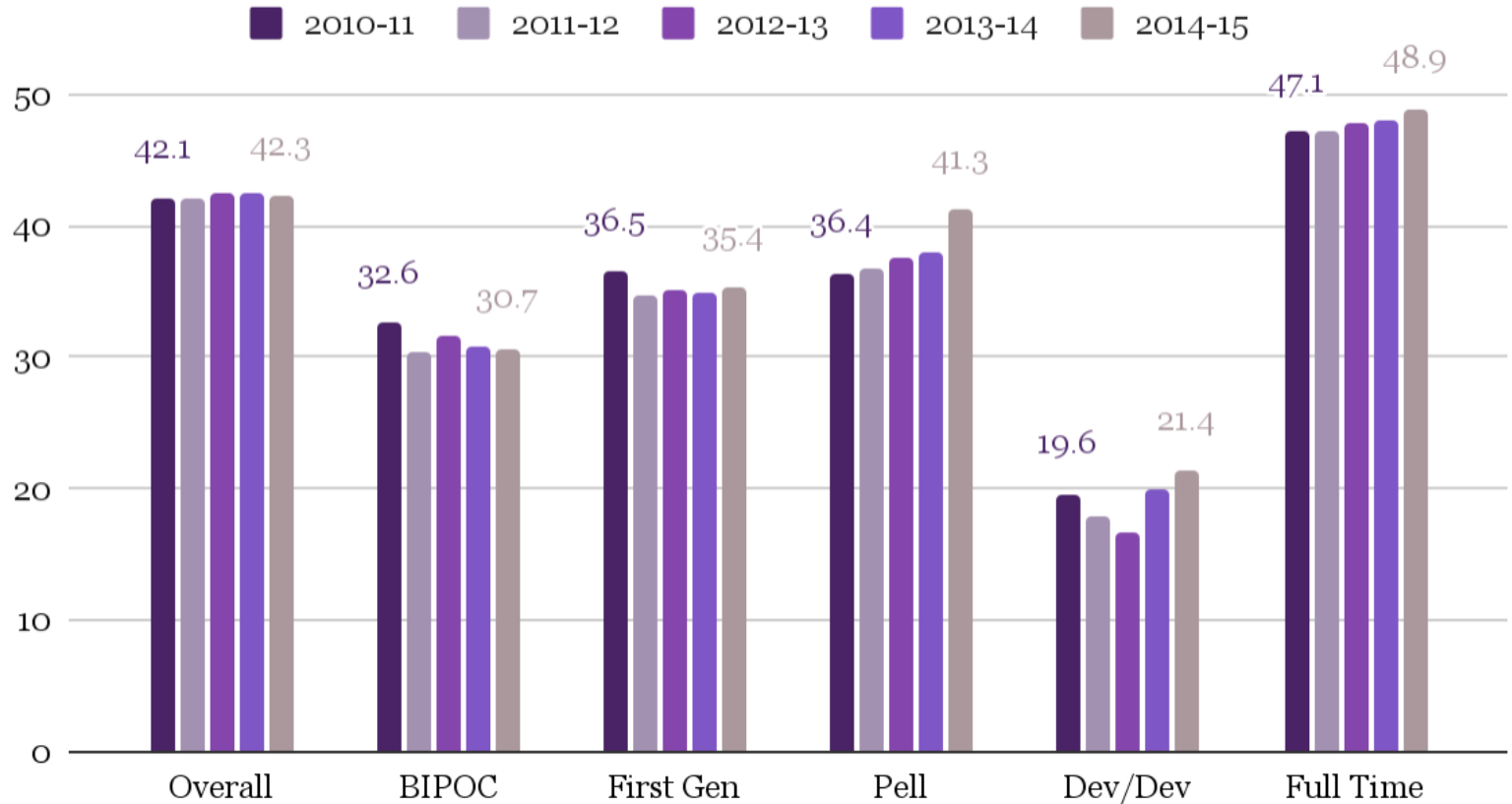
More points to celebrate!

First-Year Retention

60%: 2026 Minimum Goal




8 Year Completion Outcomes



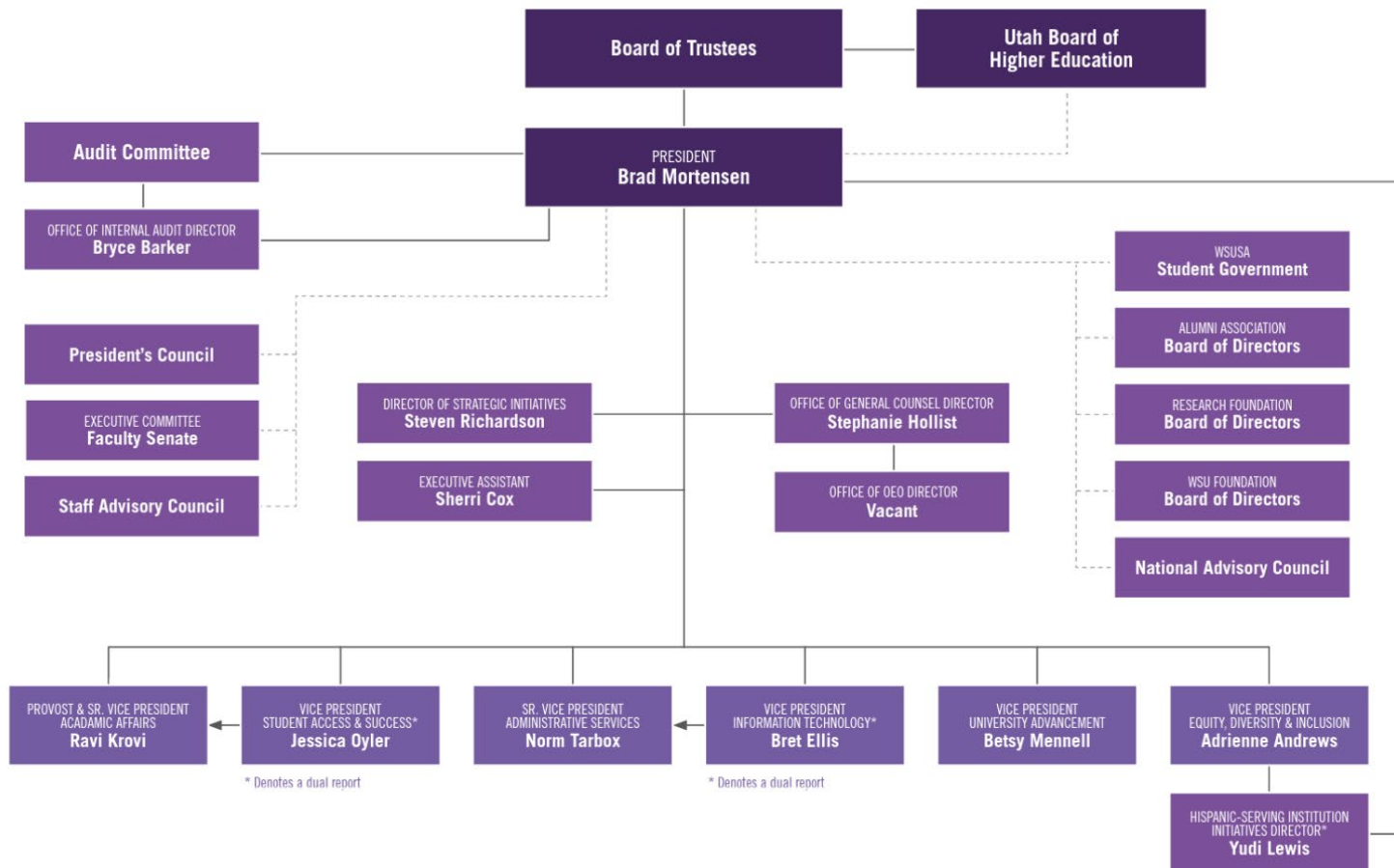



- Graduation rate 35%
- Persistence down 0.3%
- Student comments from pre-semester check in:
 - “Getting the runaround”
 - “It's all just overwhelming”
 - “returning to school after many years and I don't know what I don't know”

Still have work to do...

- 
- [Confidence in higher education down 36%](#)
 - [Enrollment cliff](#)
 - [Presidential tenure down to 5.9 yrs \('23\) vs. 8.5 yrs \('06\)](#)
 - [SL Tribune comparison article](#)

Higher Education Landscape



- 
- A fluffy, light-colored dog is lying on green grass. A small, grey and white tabby kitten is sitting on the dog's back, looking towards the camera. The dog's head is partially visible in the upper left, and its legs are visible in the lower right. The background is a soft-focus green lawn.
- Programs and services aligned around areas that will collaborate to streamline support for students.
 - Two national searches are currently underway for the AVP of Access and AVP Student Pathways and Success
 - New org chart on the Student Access & Success Division [webpage](#)
 - Changes will take effect in mid-September.

Student Access & Success Reorganization

Student Access & Success Org Chart

Anticipated effective date: September 18

DRAFT

Vice President for
Student Access and
Success (SAS)

Dual Report to President & Provost

Auxiliary Support
& Assessment

Facilities

Finance

Student
Communication

SAS & Academic
Affairs
Development

Executive Director,
Student Wellbeing

Counseling &
Psychological
Services

Campus
Recreation

Disability
Services/ ADA
Coordinator

Women's Center
(dual report with
EDI)

Student Health
and Wellness

Health Services
Contract

Associate Vice
President/ Dean of
Students

Student Conduct

Housing &
Residence Life

Student
Involvement &
Leadership

Shepherd Union

Dining Services
Contract

Assistant Vice
President for
Access

Admissions

Operations

Recruitment

GEAR Up

State GEAR Up

Upward Bound

Veterans Upward
Bound

Executive Director,
Dual Enrollment &
Outreach

Student Coaching
& Navigation

Hourly
Childcare

Dual Enrollment
Advising &
Outreach

Academic Director
for High School
Dual Enrollment

Concurrent
Enrollment
Liaisons

Executive Director,
Financial Aid &
Scholarships

Financial Aid

Scholarships

Money
Management
Center

Assistant Vice
President for
Student Pathways
& Success

Student Success
Center

First Year
Exploratory
Advising

Career Services

First Year &
Family Programs

Starfish

College Lead
Advisors

Executive Director/
Registrar

Military Affiliated
Student Center

- Revised FAFSA launch on Dec. 1 (Normally Oct. 1)
- 108 questions to about 36 (lots of branching).
- Family in college removed.
- Expected Family Contribution (EFC) replaced with Student Aid Index (SAI).
- Anticipate more students eligible for Pell Grants.
- Scholarship Universe in December.



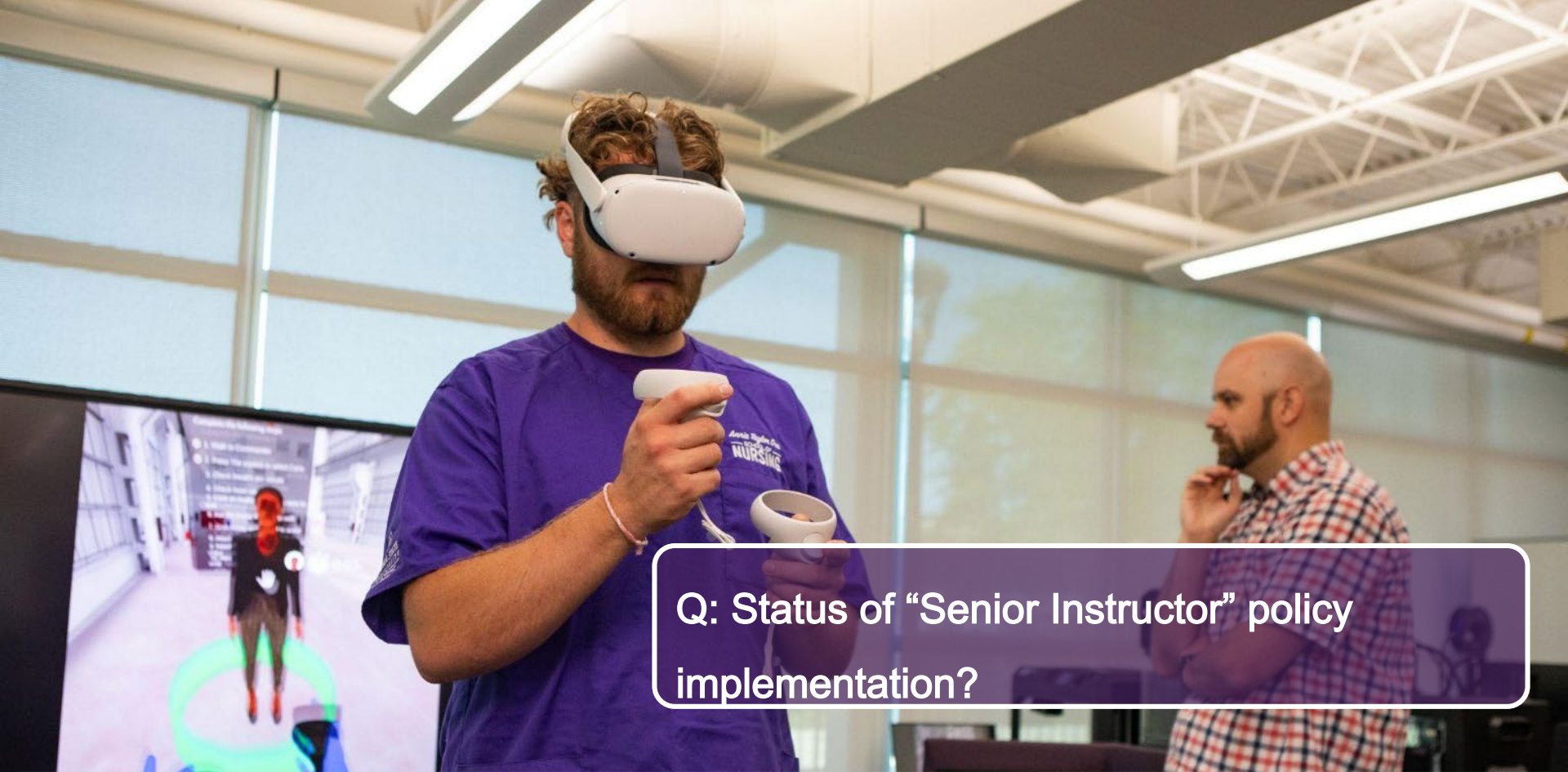
Simplified FAFSA Launch This Fall



Q: Per diem rate adjustments?

- Concur System
- Launching late fall - exact date TBD
- Being tested across campus now.
- Will align our mileage /per diem rates with federal rates.

Travel System Upgrade



Q: Status of "Senior Instructor" policy implementation?

Academic Policy Issues



Q: How much did pillars cost?

Q: When will construction end?

Q: Disc golf course?

Construction Projects



Weber Co Elections @We... · 2d ...

If you live in Hooper, North Ogden, Ogden or Roy, you have a primary election on September 5th. Check your mailbox for your ballot.

#northogden #ogden #roy
#hooper #primaryelection
#weberelections #weberelections
#webercounty #primary
#utahelections

Primary Election September 5, 2023

If your city or special district is having a Primary Election, get a MOO on to your mailbox!




**WEBER
ELECTIONS**

[Link](#) to register to vote.

[Link](#) to join “Weber State Votes.”

Civic Engagement

- 
- Aug. 25-26: VB tournament
 - Aug. 26: Saturday hours
 - Aug. 28: 1st day fall semester
 - Aug. 29: Walker Institute - Rep. Blake Moore
 - Aug. 30: Purple Pancakes at WSU Davis
 - Aug. 31: W Soccer vs UNLV
 - Aug. 31: Football vs. Central Washington
 - Sept. 1: Block Party
 - Sept. 1: Weber Welcome Car Show
 - Sept. 6: Constitution Day - George Will & Boyd Matheson
 - Sept. 23: Mount Ogden Hike
 - Sept. 28-29: Diversity Conference
 - October 6 & 7, 11-14: Jane Eyre

Upcoming Events