



# Faculty & Staff Town Hall

April 19, 2024

*Photography by Benjamin Zack*



**WEBER STATE**  
UNIVERSITY



## Cheer

- Large Co-Ed Grand National Champions
- Small Co-Ed Grand National Champions
- Partner Stunt 1st, 2nd, 5th

## Dance

- Jazz Grand National Champions
- Hip Hop Division I National Champions
- US National Premier Hip Hop Team for ICU Worlds

**Spirit Squad Dominance & Dynasty**



Study  Abroad Aide

## WEBER STATE UNIVERSITY

is placed among the

**TOP 16%**

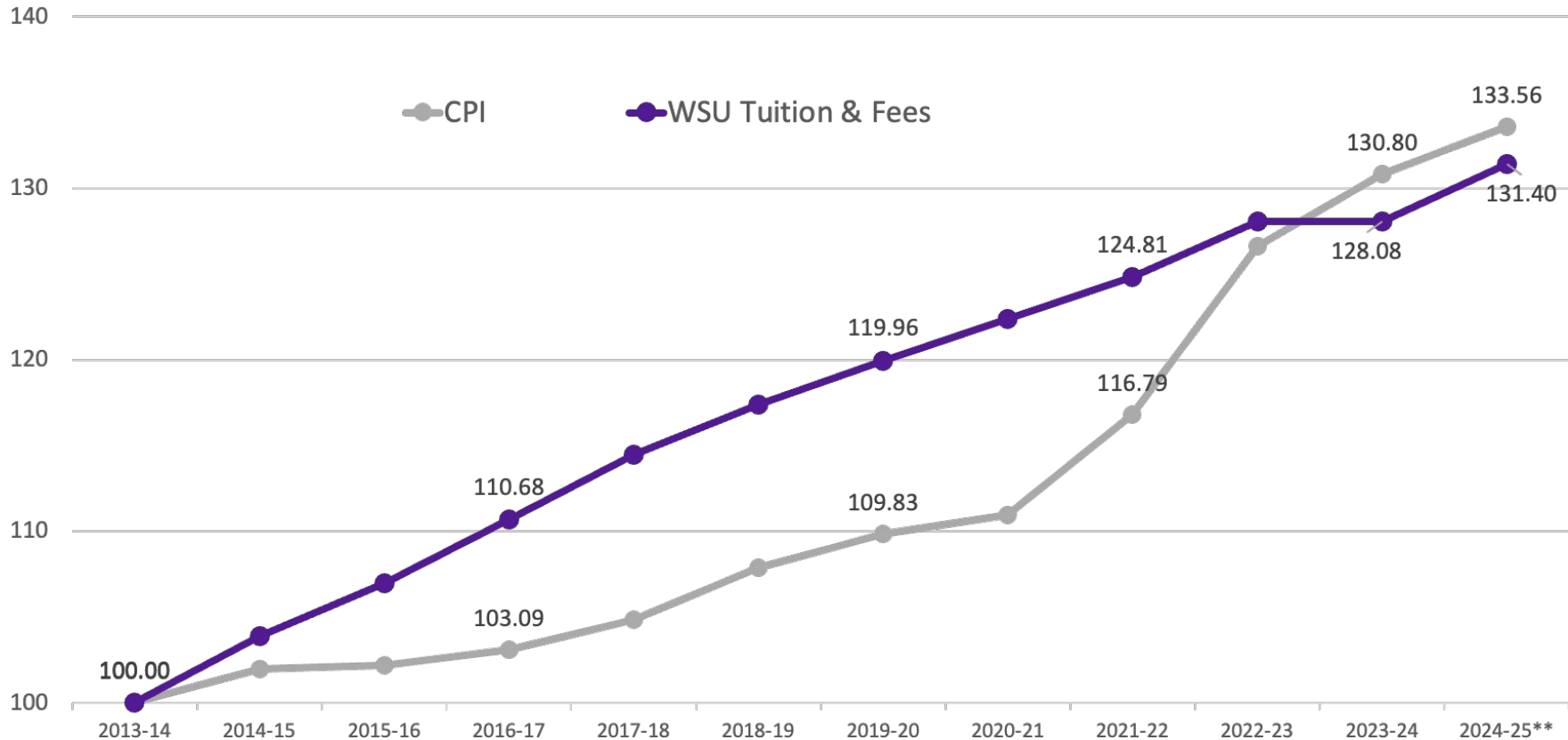
of the

### **Best Value University World Rankings for International Students**

The Best Value University World Rankings for International Students recognize institutions that stand out globally for providing a great mix of high-quality education and affordability.

[STUDYABROADAIDE.COM](http://STUDYABROADAIDE.COM)

**More ROI Recognition**



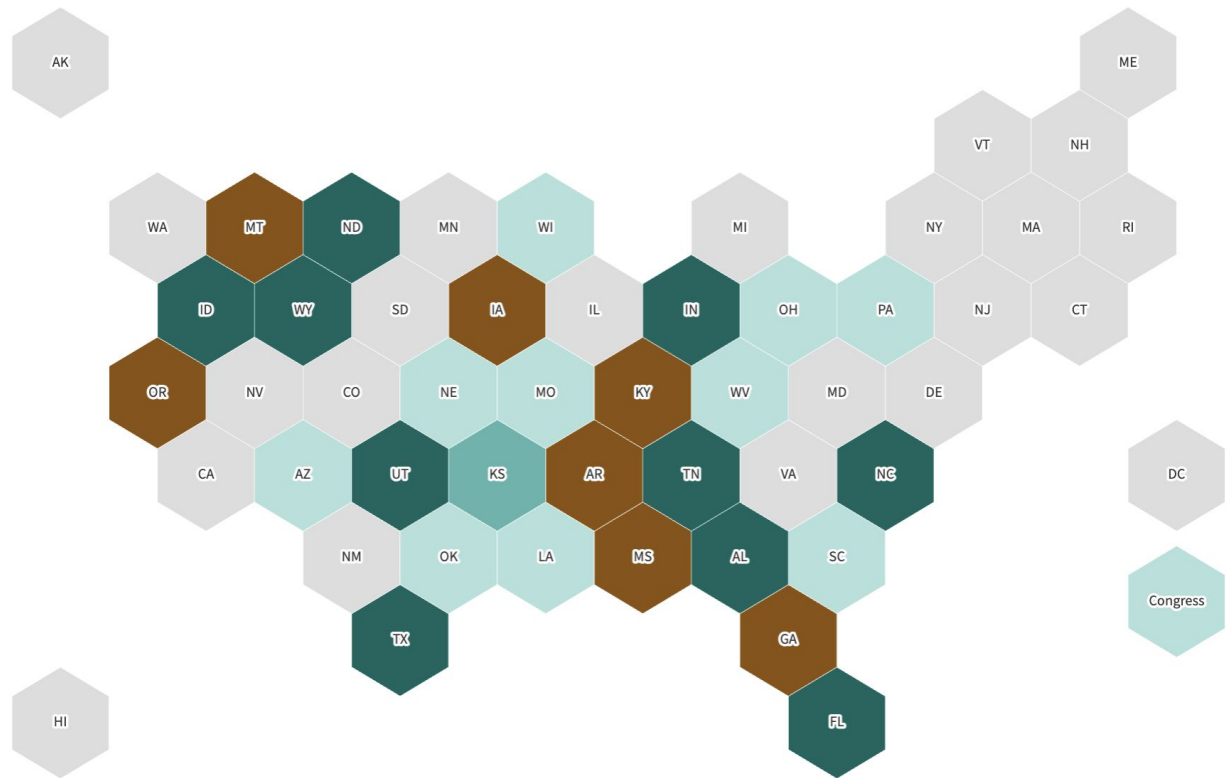
\* Comparing the July Consumer Price Index for All Urban Consumers to the WSU Tuition & Fees in place for July of each year. Indexed to July 2013 = 100

\*\* Comparison for 2024-25 is February 2024 CPI-U to newly approved 2024-25 tuition & fee rates for WSU.

## WSU Tuition & Fees vs. CPI, 2013-14 to 2024-25\*

## Where Anti-DEI Legislation Has Been Proposed

■ No bill ■ Introduced ■ Final legislative approval ■ Signed into law ■ Tabled, failed to pass, or vetoed

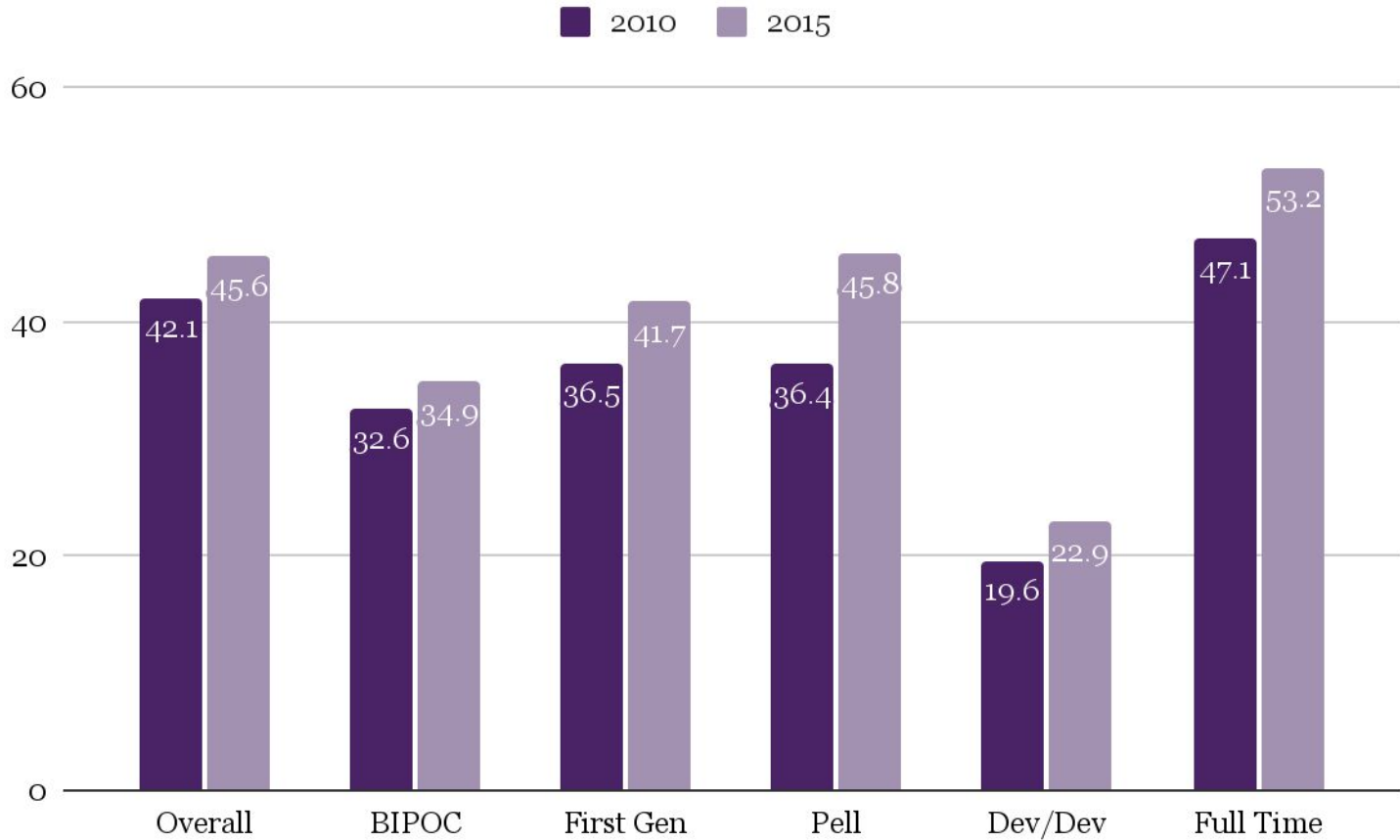


Note: Florida, Kansas, Idaho, North Carolina, and Tennessee also have bills introduced, which their colors do not reflect.

A Flourish map

- Chronicle of Higher Education Tracker
- 116 institutions nationally have made changes related to EDI
- Additional guidance from USHE is pending

# HB 261 Implementation (July 1, 2024) – What we know



## 8 Year Completion Outcomes

- VP EDI will become Associate Vice President for Student Success
- HSI Initiatives dual report to Provost and President
- Identity-based centers will no longer exist and will be realigned to support student coaching and programming
- Consolidate basic needs areas for student support and resources (i.e., Money Management, childcare, WeberCares Pantry)
- Safe@Weber pulled under Executive Director for Student Wellbeing
- Vice Provosts, the new AVP, the Center for Excellence in Teaching and Learning Director, and Human Resources to coordinate on creating a welcoming university environment

## **EDI Division Restructuring**

- Garner campus partner feedback and understanding of EDI restructure plan
- Hire new AVP
- Review USHE HB 261 Guidance
  - Centers
  - Clubs
  - Syllabi
  - Speech - Freedom of Expression - Viewpoint Neutrality
- Finalize organizational structure, job descriptions, and space configurations.
- Review and update Amplified Strategic Plan (Year 3 vs Year 4)
- Create a proactive legislative plan to continue fostering stakeholder support of WSU student access and success efforts that close gaps and continue to create optimal learning opportunities for students, staff, and faculty



## **HB 261 Next Steps**



## HB 438

### Tenure/Post-Tenure

- PPM 8-11, Evaluation of Faculty Members
- PPM 8-12 Dated Guidelines for the Ranking Tenure Review Process
- PPM 8-20 Action by the Provost and President

### Termination Faculty Appointment

- PPM 8-10 Termination of Faculty Appointment
- PPM 9-16 Termination Due to Program Discontinuance/Modification or Financial Exigency

## HB 438 Deletions

- PPM 3-10a Termination of Faculty Appointment
- PPM 8-21 Academic Tenure: Definition/Implication/Termination
- PPM 8-25 Reasons for Dismissal of Tenured Faculty

## SB 192


- PPM 1-5 Responsibilities of the President
- **?: *Preserve academic freedom?***

**HB 438 & SB 192 Policy Changes (May 1, 2024)**



- Community Education Center:  
Yesenia Quintana (May 15)
- Vice Provost: Roy Kwon (July 1)
- Building Puentes
  - Soft launch Fall '24
  - Dual report: Roy Kwon/James Hedges
  - Grant program administrator
  - **?: Faculty involvement, cost, financial sustainability**
- General Education revisions

## Academic Affairs Updates

- 
- **Up 5.9% degree-seeking students.**
  - **Up 5.7% FTE**
  - **Up 23% in first-time students**
  - **Up in Pell eligible students & 25+ students; Down in first-generation students**

**Enrollment Updates: Summer 2024**



- **We have received ~10k FAFSAs; ~6k are free of errors**
- **Fall enrollment is currently down 7%**
- **As FAFSAs are processed, need-based scholarships will begin to show up for students in ScholarshipUniverse (in their student portal)**
- **Admitted students are up 25% for fall.**
  - Admitted students with concurrent credit up 13%

## **FAFSA & Fall Enrollment**

- USHE Policy R751 (2018): requires centralized scheduling.
- USHE Space Utilization Report:
  - WSU has among lowest levels of space utilization
  - WSU is only institution not doing centralized scheduling.
- State-funding for capital projects based on meeting USHE space utilization standards.
- Piloting with dean and faculty feedback for spring 2025.



## Centralized Scheduling



- Working goal: \$200 million
- \$77,032,729 as of March 31, 2024



**Amplify Weber State Campaign & “Light the W”**

- Xeriscaping
- Element Hotel
- McKay Education Building



## Construction Updates



- Convocation Friday/Saturday Schedule
- Reserve faculty/staff tickets: [weber.evenue.net](http://weber.evenue.net) or call 801-626-8500
- April 26, 1 pm: Hwy 89 Southbound Closure
- April 25, 6 pm: Honorary Degree & Brady Presidential Reception
- April 24: Administrative Professionals Day
- And many, many, more!

**Commencement Week**



- 
- Free Expression Resolution Task Force
  - Code Purple App
  - New Title IX Regulations from ED released today.
  - ***?: IT Reorganization plan***
  - ***?: Addressing increase in departure of underrepresented employees***

## Other Items