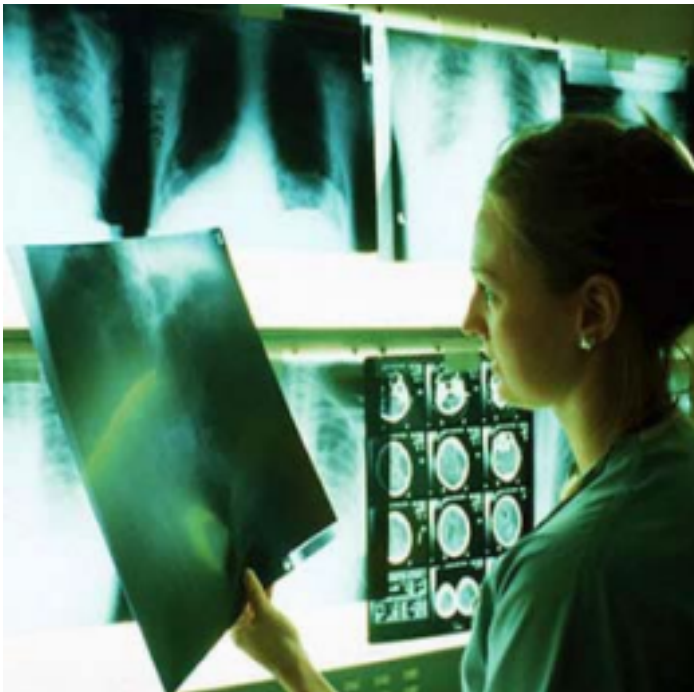


LIMITED LICENSE IN RADIOLOGIC SCIENCES Spring Semester 2025

All Courses Must be Taken Together in the Same Semester
Limited Enrollment



Courses

RADT 1021 – CRN 32857

RADT 1023 – CRN 32858

RADT 1024 – CRN 32859

RADT 1025 – CRN 32860

Courses will be taught in person on Mondays from 2:00 to 6:00 PM in MH 351

Associate of Science Health Science

RADIOLOGIC SCIENCES Track

Intro to Radiologic Technology Course:

RADT 1022 – CRN 32856

Course will be taught in person on Mondays from 1:00 – 2:00 PM in MH 351

For information regarding the courses and if you encounter registration difficulties, please contact the

Radiologic Sciences Department at radas@weber.edu or 801-626-6329