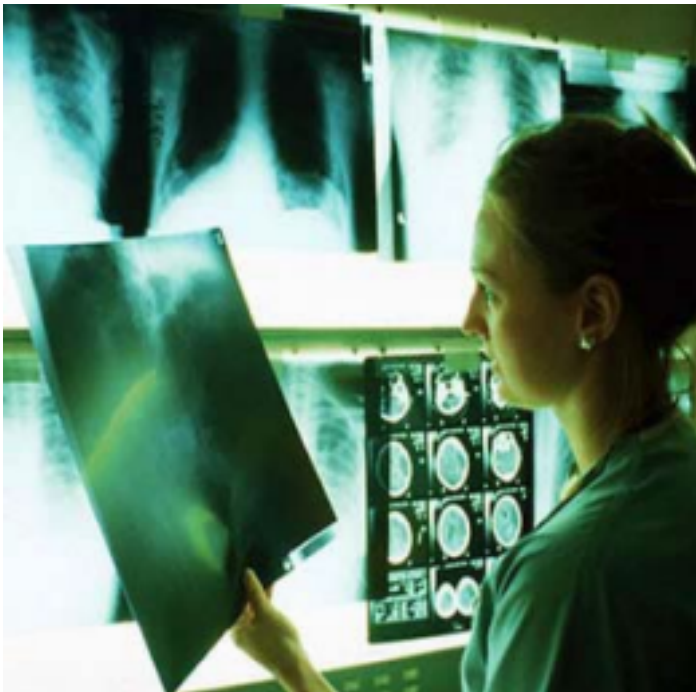


LIMITED LICENSE IN RADIOLOGIC SCIENCES Spring Semester 2024

All Courses Must be Taken Together in the Same Semester
Limited Enrollment



Courses

RADT 1021 – CRN 34430

RADT 1023 – CRN 34431

RADT 1024 – CRN 34432

RADT 1025 – CRN 34433

Courses will be taught in person on Mondays from 2:00 to 6:00 PM in MH 351

Associate of Science Health Science

RADIOLOGIC SCIENCES Track

Intro to Radiologic Technology Course:

RADT 1022 – CRN 34429

Course will be taught in person on Mondays at 1:00 – 2:00 PM in MH 351

For information regarding the courses, please contact
Robertferguson@weber.edu

If you encounter registration difficulty, please contact the

Radiologic Sciences Department at radas@weber.edu 801-626-6329