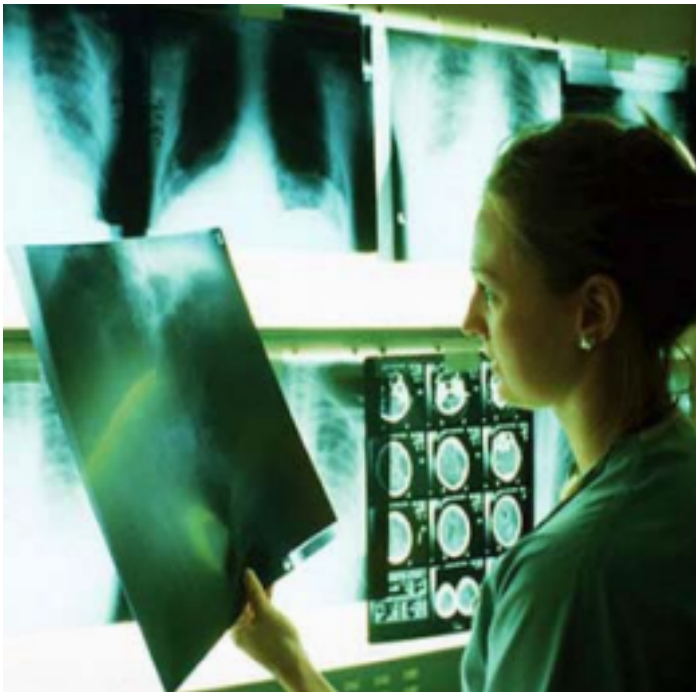


# LIMITED LICENSE IN RADIOLOGIC SCIENCES Fall Semester 2024

All Courses Must be Taken Together in the Same Semester  
Limited Enrollment



## Courses

RADT 1021 – CRN 25334

RADT 1023 – CRN 25336

RADT 1024 – CRN 25337

RADT 1025 – CRN 25338

Courses will be taught in person on Mondays from 2:00 to 6:00 PM in MH 351

## Associate of Science Health Science

### RADIOLOGIC SCIENCES Track

#### Intro to Radiologic Technology Course:

#### **RADT 1022 – CRN 25333**

Course will be taught in person on Mondays from 1:00 – 2:00 PM in MH 351

For information regarding the courses, please contact [ambreepenrod@weber.edu](mailto:ambreepenrod@weber.edu)

If you encounter registration difficulties, please contact the

Radiologic Sciences Department at [radas@weber.edu](mailto:radas@weber.edu) or 801-626-6329